

# The 1/4-Sized 8Pin BreadBoard (25c8Pin)

The 25c8Pin 1/4-sized (25c = one quarter) breadboard is a small, densely populated module used for mounting small 8 pin (or smaller) DIP IC chips.

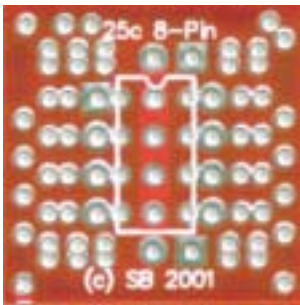
Necessary Parts:

None!

Common uses for such a module include:

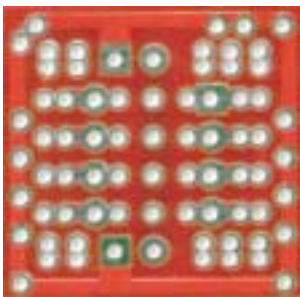
- Mounting 555 timer IC chips
- Mounting 741 Op-Amp chips
- Mounting 821 1/12 Voltage detectors
- Mounting Opto-isolator chips, or anything else fitting in a less-than 8-pin package

This is a totally disposable module, with no specific purpose built into it. If you find yourself wondering what you can use to build a (fill in the blank) that needs a small IC chip, consider using this.



Top (2X scale)

- Edge Rail of PCB is Ground (-).
- Center Rail of PCB is Vcc (+).



Bottom (2X scale)