

# The 1/4-Sized BreadBoard (25cBB)

The 25cBB 1/4-sized (25c = one quarter) breadboard is a small, densely populated module used for practically what ever you can fit on it.

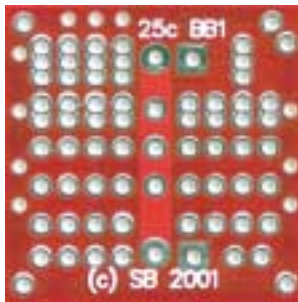
Necessary Parts:

None!

Common uses for such a module include:

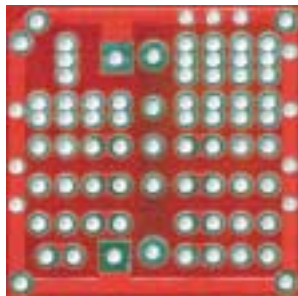
- Signal conditioning & other miscellaneous circuitry
- Custom Solarengines
- Tactile / optical / miscellaneous sensor mounts
- Power Switches
- Charging jacks
- Mechanical frame mounts

This is a totally disposable module, with no specific purpose built into it. If you find yourself wondering what you can use to build a (fill in the blank), consider using this.



Top (2X scale)

- Edge Rail of PCB is Ground (-).
- Center Rail of PCB is Vcc (+).



Bottom (2X scale)